

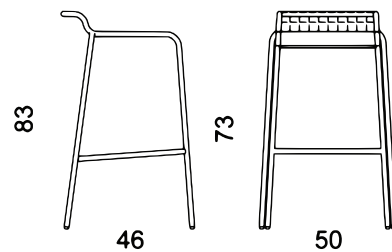
SAGAX

NASSA STOOL



Sedia impilabile in rete stirata, struttura in acciaio, verniciata previo trattamento cataforesi. Disponibile con e senza braccioli, anche imbottita parzialmente.

Stackable chair made in stretched grid, steel structure, painted after a treatment against rust, with or without armrests, also partially stuffed.



Struttura_ Frame



01



02



03



04



05



06



07



08



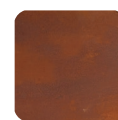
09



10



11



Corten